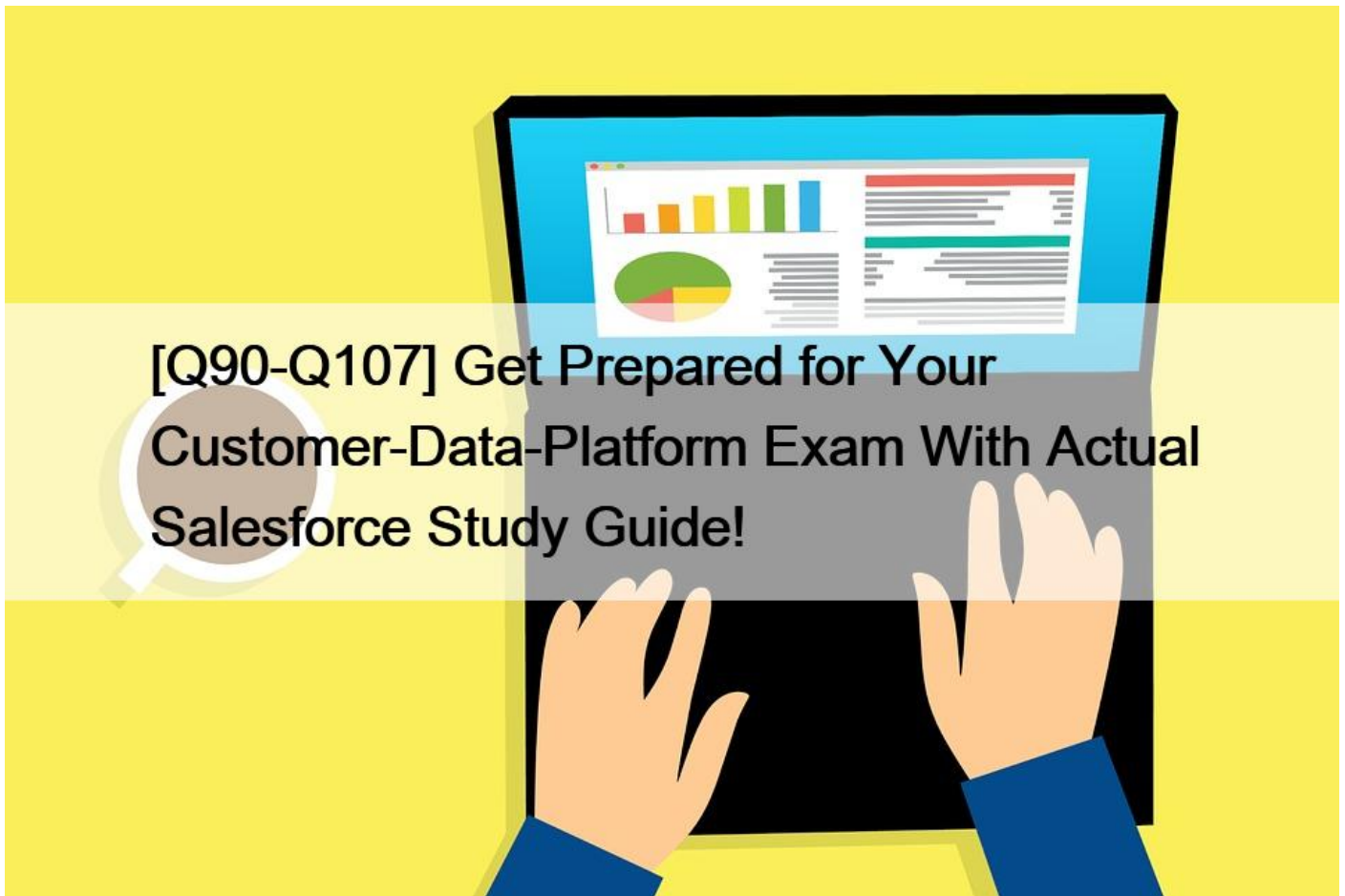


[Q90-Q107] Get Prepared for Your Customer-Data-Platform Exam With Actual Salesforce Study Guide!



Get Prepared for Your Customer-Data-Platform Exam With Actual Salesforce Study Guide! Pass Your Next Customer-Data-Platform Certification Exam Easily & Hassle Free Q90. What is the max limit of records can be retrieved by the Profile and Query API in a single call?

- * 2000
- * 9999
- * 4999
- * No max limit

Q91. Which two features can be used to validate the data in the unified profile object? [Answer need confirmation]

- * Query API
- * Data Explorer
- * Segmentation
- * Identity Reconciliation

Q92. In addition to Unified Individual Object, what other object does Salesforce CDP automatically create and manage during the Identity Resolution process?

- * Unified Lead Objects

- * Unified Contact Point Objects
- * Unified Order Objects
- * Unified Product Objects

Q93. Which operator can be used to create a segment for a birthday campaign that is evaluated daily?

- * Is Birthday
- * Is this Year
- * Is Anniversary Of
- * Is between

Q94. Data from which object will be deleted when processing a Data Deletion or Right to be forgotten request

- * Individual and all related entities in data model
- * Individual, all related entities in data model and mapped data streams
- * Unified individual, all related entities in data model and mapped data streams
- * Unified individual and all related entities in data model

Q95. What programming language is used to configure Calculate Insights?

- * Python
- * SOQL
- * ANSI SOQL
- * DCL

Q96. What does the ignore empty value option do in Identity Resolution?

- * Ignores empty reconciliation rules
- * Replaces the value with a null
- * Ignores empty fields when running reconciliation
- * Modified the value in the field with a predefined value

Q97. Activation Target auto configured after connected with the platform

- * SFMC
- * S3 Bucket
- * Personalization through Interaction Studio
- * Commerce Cloud

Q98. What are two ways a marketing user can incorporate a campaign code from an external (…) bucket?

- * Include campaign code into the filename specification
- * Include campaign code into the activation name
- * Include campaign code into the segment name
- * Include campaign code into the activation description

Q99. Which data model defines the complete set of experiences that customers go through when interacting with a company?

- * Party Data Model
- * Journey Data Model
- * Engagement Data Model
- * Case Data Model

Q100. When using the Cloud Storage data stream ingestion where does Salesforce CDP ingest from?

- * Customer provided S3 bucket
- * Salesforce provided S3 bucket
- * Salesforce Information Model

- * Any external cloud storage with a restful API

Q101. Which two files are activated to Cloud file storage to publish segment?

- * A file that contains security credential
- * A file that contains the segment definition
- * A file that contains the segment members with additional attributes
- * A file that contains calculated insights

Q102. What is the maximum limit of the number of records for Full Refresh Extract Method?

- * 10 million
- * 40 million
- * 50 million
- * No hard limit

Q103. What type of data is collected by a company or entity that does not have a direct relationship with the visitor and customer?

- * Partner Data
- * First Party Data
- * Third Party Data
- * Second Party Data

Q104. How can a Marketing Team member get Marketing Cloud Engagement profile attribute into Customer Data Platform?

(Choose 1)

- * Map MobileConnect Starter Data Bundle
- * Map MobilePush Starter Data Bundle
- * Map Data view `‘_EnterpriseAttribute’` to CDP
- * Map Email Studio Starter Data Bundle

Q105. Which two frequency options are available when ingesting Marketing Cloud Data Extensions?

- * 15 minutes
- * 24 hours
- * 60 minutes
- * 12 hours

Q106. Records from which object can be retrieved via the Salesforce CDP Query API?

- * Segment membership
- * Segment metadata
- * Data Stream metadata
- * (`…`) data model

Q107. What are the three available data related APIs in CDP?

- * Transactional API
- * Profile API
- * Unified Profile API
- * Data Query API
- * Calculated Insights API

Ace Customer-Data-Platform Certification with 202 Actual Questions:
https://www.braindumpsit.com/Customer-Data-Platform_real-exam.html