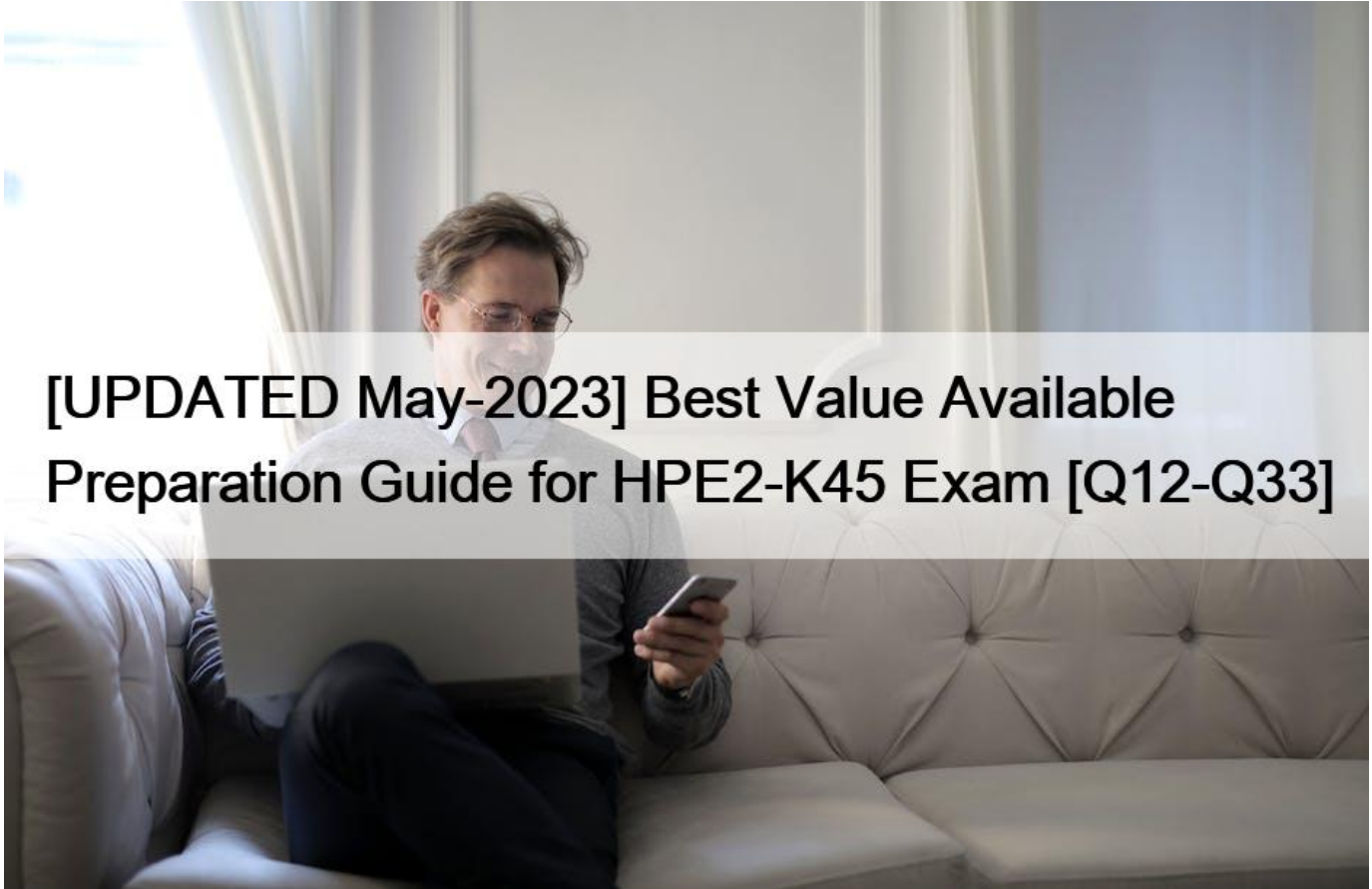


[UPDATED May-2023 Best Value Available Preparation Guide for HPE2-K45 Exam [Q12-Q33]



[UPDATED May-2023] Best Value Available Preparation Guide for HPE2-K45 Exam
1 Full HPE2-K45 Practice Test and 40 Unique Questions, Get it Now!

Earning the HPE2-K45 certification demonstrates that a candidate has the skills and knowledge required to effectively deploy and manage HPE SimpliVity solutions in a production environment. The certification is recognized by IT organizations worldwide and can help professionals advance their careers by demonstrating their expertise in hyperconverged infrastructure technology.

The HP HPE2-K45 exam is designed for IT professionals who want to demonstrate their expertise in using HPE SimpliVity technology. HPE SimpliVity is a hyperconverged infrastructure solution that combines compute, storage, and networking in a single appliance. It enables organizations to simplify their IT operations, reduce costs, and improve performance. The HPE2-K45 exam measures the knowledge and skills required to install, configure, manage, and troubleshoot HPE SimpliVity solutions.

NEW QUESTION 12

When should an svtncli account be used?

- * to access HPE SimpliVity data using REST API
- * when two or more VCs are not available
- * when hypervisor-based user is unavailable
- * for a daily management tasks performed using CLI

NEW QUESTION 13

During the troubleshooting process, HPE Support requested a Support Capture file from multiple HPE SimpliVity hosts. The customer is concerned about security and wants to know what is included in this file.

What information is included in this file? (Select two.)

- * License entitlement
- * System status information
- * HPE InfoSight connection parameters
- * Security token to access system remotely
- * Log files

NEW QUESTION 14

What is the difference between crash consistent and application consistent cloning methods?

- * Application-consistent clones allow the pending IO operations to finish before committing them to the database.
- * Both methods are the same; the only difference is speed of cloning.
- * Crash consistent method should be used only for the virtual machines with Fault Tolerance enabled.
- * Application consistent method is available only for Linux operating systems.

NEW QUESTION 15

A customer has development virtual machines that do not require storage HA. How can the customer save storage capacity within an HPE SimpliVity cluster?

- * By disabling HA cluster functionality for HPE SimpliVity Federation
- * By placing them on HPE Storence instead of HPE SimpliVity
- * By disabling the HA feature for only these virtual machines at vCenter Server
- * By creating a single-replica datastore for these virtual machines

NEW QUESTION 16

A customer wants to provide access to the HPE SimpliVity datastores for compute nodes running CPU-intensive virtual machines. What should you tell the customer?

- * It is supported to connect up to 5 compute nodes per SimpliVity node.
- * Additional license is required to connect ESXi nodes to SimpliVity datastores.
- * Connecting ESXi compute nodes is possible only when VMFS datastores are configured at SimpliVity

Federation level

- * Compute nodes must reside in the same cluster as HPE SimpliVity nodes.

NEW QUESTION 17

Refer to exhibit:

Virtual machine name: 01_Win01_FOR

ADD FILTER SEARCH Applied: 0

BACKUP ACTIONS

- Restore Virtual Machine
- Restore Files
- Rename Backup
- Copy Backup
- Calculate Unique Backup Size
- Delete Backup
- Lock Backup
- Set Expiration Date

Name	Template	Timestamp	Status	Size	Unique Backup Size	Unique Size Calculation Time	Sent Size	Sent Duration	Size	
2020-02-22T12:40:00-05:00	LocalCluster	No	2/22/20, 6:40 PM	Protected	489.1 GB	0.0 KB	0.0 KB	0.0 KB	2,7	
2020-02-22T12:30:00-05:00	LocalCluster	No	2/22/20, 6:30 PM	Protected	489.1 GB	0.0 KB	0.0 KB	0.0 KB		
22T12:50:01-05:00			2/22/20, 6:50 PM	Protected	489.1 GB	0.0 KB	0.0 KB	0.0 KB		
2/22/20, 7:00 PM			2/22/20, 7:00 PM	Protected	489.1 GB	52.7 MB	2/22/20, 7:24 PM	8.0 MB	30 secs	2,7
2/22/20, 7:20 PM			2/22/20, 7:20 PM	Protected	489.1 GB	0.0 KB	0.0 KB	0.0 KB		
2/22/20, 7:10 PM			2/22/20, 7:10 PM	Protected	489.1 GB	0.0 KB	0.0 KB	0.0 KB		
2/22/20, 7:00 PM			2/22/20, 7:00 PM	Protected	489.1 GB	0.0 KB	0.0 KB	0.0 KB		

You are using Restore Virtual Machine for a given virtual machine. Which result is achieved by this operation?

- * Virtual machine boot partition mapped as IS image to another VM
- * New snapshot added to existing virtual machine
- * New linked-clone created
- * New virtual machine created out of this backup

NEW QUESTION 18

How is each datastore presented to HPE SimpliVity nodes?

- * as a part of vSAN
- * as a VMFS datastore
- * as an NFS datastore
- * as a vVol

NEW QUESTION 19

A customer plans to deploy HPE SimpliVity 380 Gen10 LFF H and HPE SimpliVity 380 Gen10 SFF H nodes.

What should you recommend for this setup?

- * Put each type of the nodes in a different federation.

- * Replace the LFF nodes with all-flash nodes.
- * Put all of the nodes in the same cluster.
- * Put SFF and LFF nodes in separate clusters.

NEW QUESTION 20

Which functionality does HPE InfoSight for HPE SimpliVity provide?

- * balance workloads across HPE SimpliVity nodes based on utilization
- * recommendation for guest operating system settings optimization
- * automated firmware and software upgrades for registered customers
- * monitoring of virtual machine latency

NEW QUESTION 21

A customer has a remote office with very limited rack space. Which HPE SimpliVity model best meets this customer's needs?

- * HPE SimpliVity 325 GenIO
- * HPE SimpliVity 380 GenIO G
- * HPE SimpliVity 2600
- * HPE SimpliVity 380 GenIO H

NEW QUESTION 22

In an HPE SimpliVity 10-node cluster, a simultaneous increase of 10 requests across several VM caused a surge in 10 traffic in a single node. Which HPE SimpliVity feature can evenly distribute the 10s across the cluster?

- * Resource Balancer
- * Management Virtual Appliance
- * Arbiter
- * Intelligent Workload optimizer

NEW QUESTION 23

A customer is planning to deploy VDI infrastructure on HPE SimpliVity platform. They are considering implementing stretched cluster. Which statement regarding the design of a stretched cluster is true?

- * Stretched clusters need additional licenses for VDI workloads,
- * Stretched clusters support up to 96 HPE SimpliVity hosts.
- * An Arbiter should be placed in a primary site and replicated to the secondary site.
- * Both Linked clones and Full clones are supported on a stretched cluster.

NEW QUESTION 24

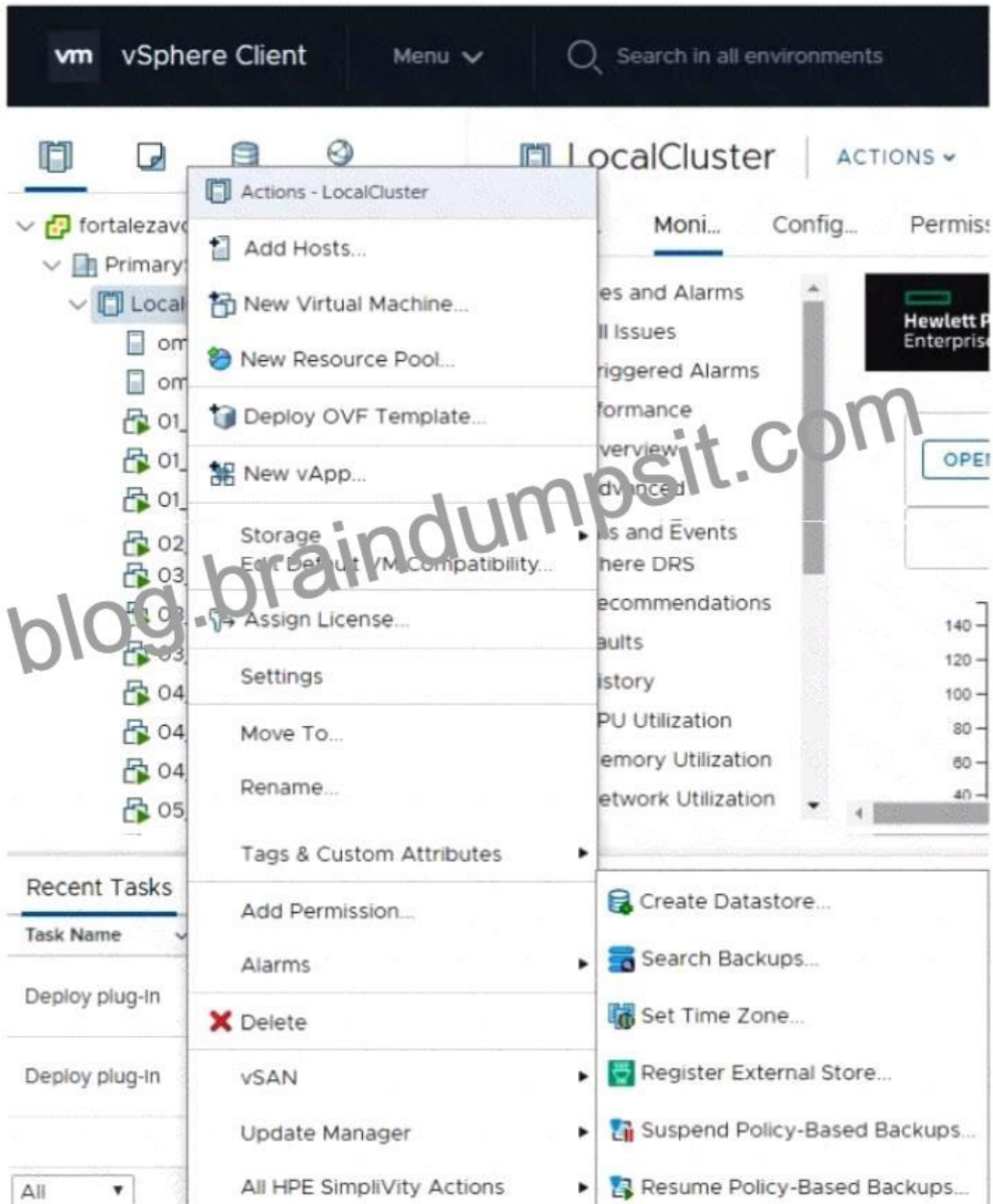
Hyper Protected refers to which HPE SimpliVity ability?

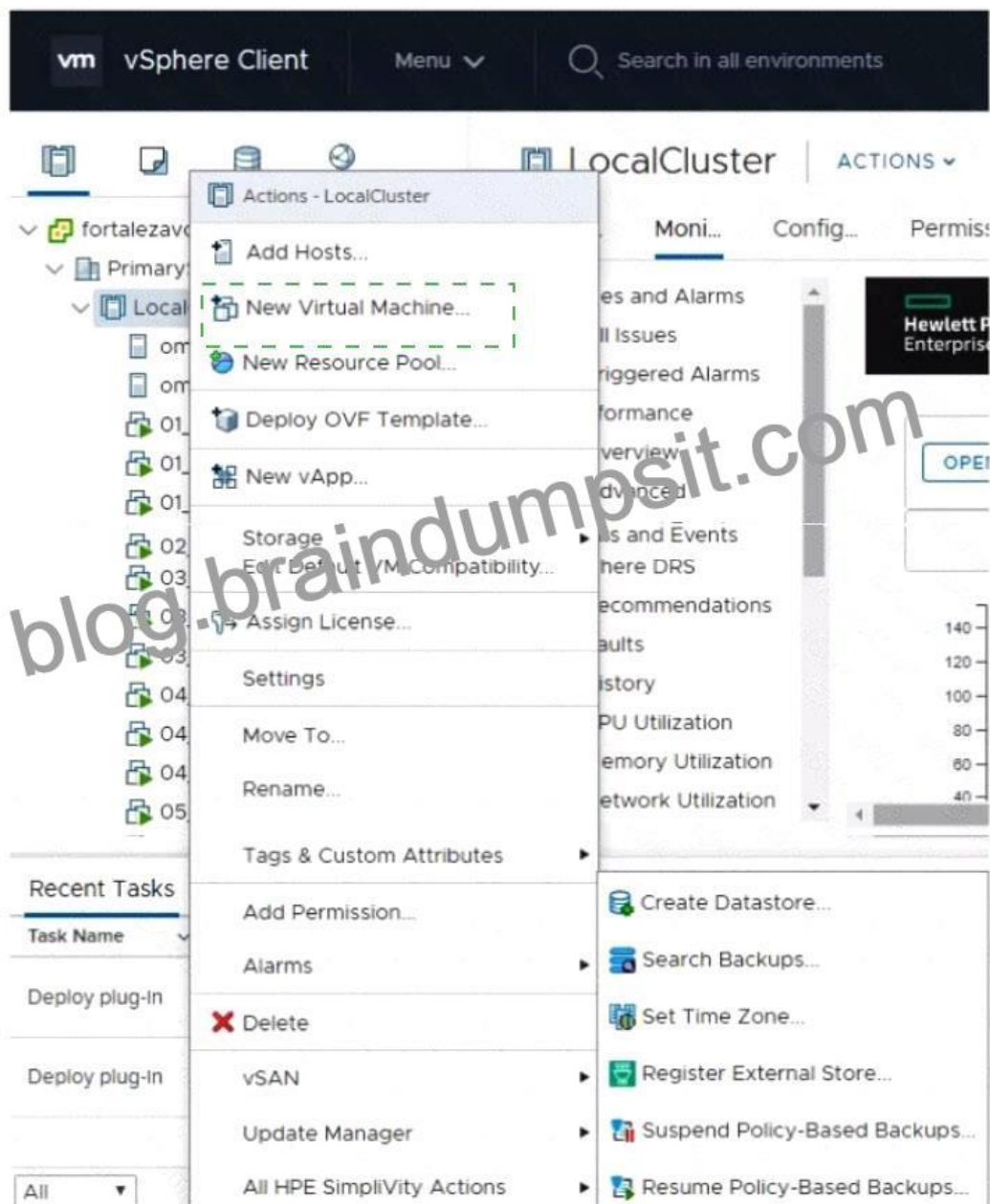
- * Backup or restore 1TB VM in less than 1 minute.
- * Restore individual files from a VM backup.
- * Define a storage policy using RAID 6 or RAID 60 to protect the VM.

* Integrate with Veeam to provide an external backup solution.

NEW QUESTION 25

Click the option that will allow you to integrate HPE SimpliVity with HPE Storence.





NEW QUESTION 26

A customer wants to provide access to the HPE SimpliVity datastores for compute nodes running

CPU-intensive virtual machines. What should you tell the customer?

- * It is supported to connect up to 5 compute nodes per SimpliVity node.
- * Additional license is required to connect ESXi nodes to SimpliVity datastores.
- * Connecting ESXi compute nodes is possible only when VMFS datastores are configured at SimpliVity

Federation level

- * Compute nodes must reside in the same cluster as HPE SimpliVity nodes.

NEW QUESTION 27

You want to use the HPE SimpliVity move operation to move a virtual machine between clusters. What do

you have to do prior to completing the move operation?

- * Install VS5 agent in the virtual machine.
- * Take a virtual machine snapshot.
- * Shut down the virtual machine.
- * Suspend the virtual machine.

The HP HPE2-K45 certification is a valuable credential for IT professionals who want to advance their careers in the field of HPE SimpliVity. This certification demonstrates to employers that the candidate has the skills and knowledge required to install, configure, manage, and troubleshoot HPE SimpliVity solutions. The certification is valid for three years, after which candidates must recertify to maintain their credentials.

Get Instant Access to HPE2-K45 Practice Exam Questions: https://www.braindumpsit.com/HPE2-K45_real-exam.html